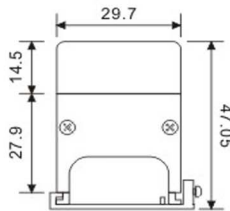
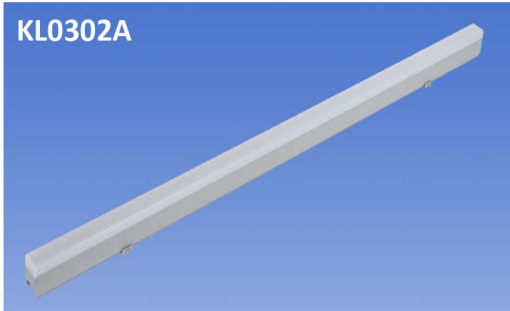
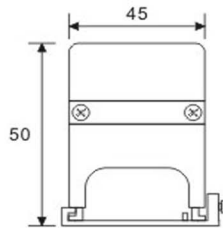
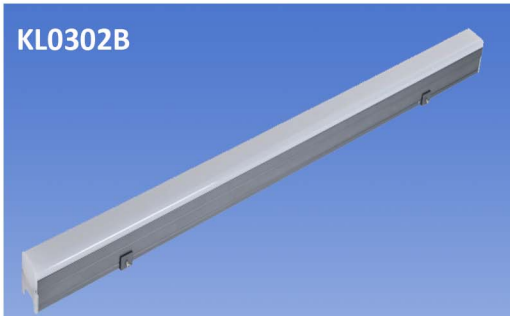




KL0302A



KL0302B



DESCRIPTION:

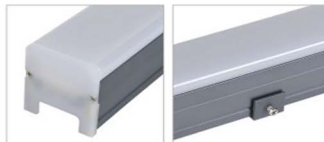
Surface mounted LED Linear profile
 Body made of extruded aluminium, natural finish,
 Electro powder coated in silver, black, white color
 available on request .
 Polycarbonate clear, frosted, opal diffuser
 All in one optical lens, efficiency $\geq 85\%$
 waterproof male and female connector with cable
 waterproof seal molding shaped double Silicone
 seal.
 Constant current output Driver.
 Single color LED=1- circuit output
 RGB 3In 1 LED=3 circuit output
 Operating temperature 50°C, -25°C
 Ideal for external, interior and facade lighting
 European standard of EN 60598

SL3528 - Single Line Module
DL3528 - Double Line Module

KL0302A



KL0302B



BROADWAY - UK Ltd.

LED Type	SL3528	SL5050	DL3528	DL5050	DL5050
Power	(Customized Wattage)				
Input Voltage	DC12V / 24V	DC12 / 24V	DC12V / 24V	DC12V / 24V	DC12V / 24V
CRI	≥80	≥80	≥80	≥80	≥80
Luminous Flux	8LM/LED	22LM/LED	16LM/LED	44LM/LED	44LM/LED
Color Temp.	2700-6500K	2700-6500K	2700-6500K	2700-6500K	RGB
Power Factor	>0.95	>0.95	>0.95	>0.95	>0.95
Temp. in Working	-20°C +50°C	-20°C +50°C	-20°C +50°C	-20°C +50°C	-20°C +50°C
Humidity of Working	<95%	<95%	<95%	<95%	<95%
THD	<20%	<20%	<20%	<20%	<20%
Beam Angle	8°/15°/30°/45°/60°	8°/15°/30°/45°/60°	8°/15°/30°/45°/60°	8°/15°/30°/45°/60°	8°/15°/30°/45°/60°
Size - KL-0302A	L1500/1200/1000/800/500/300*W30*H47mm				
Size - KL-0302B	L1500/1200/1000/800/500/300*W45*H50mm				
Life Span	45000-50000Hrs				

DIMMERS & RGB CONTROLLERS



RC dimmer

Technical details

Voltage: 12V/24V
 Power:
 • 216W - 12V
 • 432W - 24V
 Dimensions:
 91 x 89 x 24 mm



DMX Controller

Technical details

Voltage: DC24V
 Output Current: 2A/ch
 Output Power: 1440W
 Dimension:
 258 x 83.5 x 40.5mm



Radio controller RGB
2.4G Full-color

Technical details

Voltage: 5V - 24V
 Power:
 • 288W - 12V
 • 576W - 24V
 Dimensions:
 120 x 62 x 24 mm
 Remote range: 50m

PHOTOMETRIC DATA

