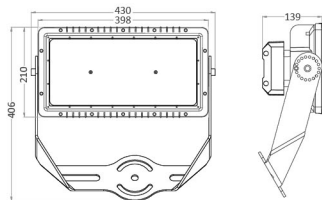
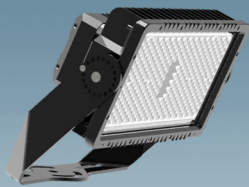




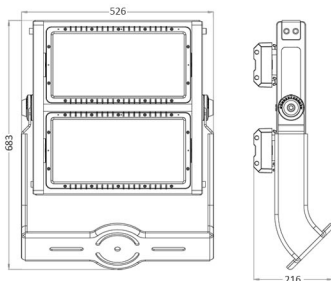
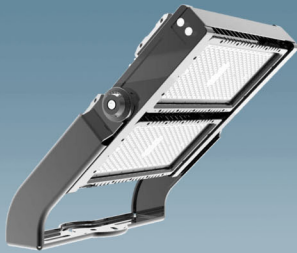
BFL01-250/300



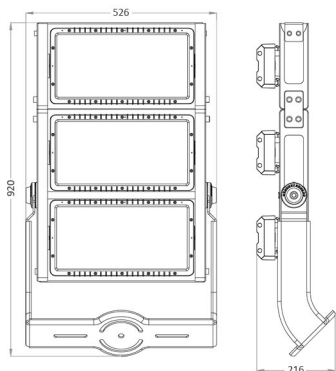
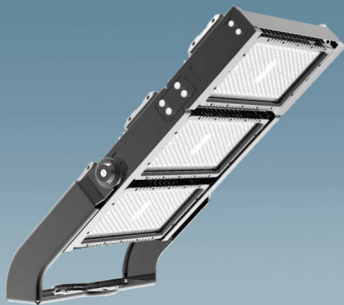
DESCRIPTION:

Heavy duty floodlight luminaire for sports field and industrial use
 Body made of die-cast aluminium with polyester powder coated finish.
 Epoxy cationic electro-coating, upon phospho-chromate treatment, Uv-stabilising primer.
 Diffuser made of tempered, thermal shock and impact resistant glass.
 Adjustable mounting bracket
 Stainless steel cable gland
 High corrosion resistant capability
 High quality LED Chip Philips (Lumileds) SMD3030/5050
 - Heat resistant and solid conduct wiring
 - Ideal for External lighting
 - European standard of EN 60598

BFL01-500/600



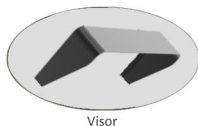
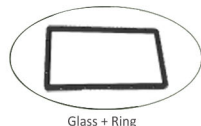
BFL01-750/900



LUMILEDS SMD3030/5050
 Greater than 135lm/W high efficacy, illumination grade LED light source.



HIGH-END LED DRIVER

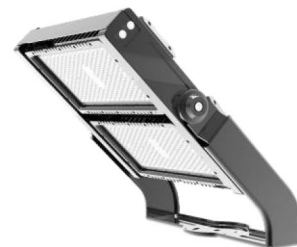


★ 250W MODULE

Product Code	BFL01-250W	BFL01-500W	BFL01-750W	BFL01-1000W
Rated Power	250W LED	500W LED	750W LED	1000W LED
LED Module	Philips, SMD3030 1x250W	Philips, SMD3030 2x250W	Philips, SMD3030 3x250W	Philips, SMD3030 4x250W
Luminous Flux	140lm/W	140lm/W	140lm/W	140lm/W
Input Voltage	AC100-277V	AC100-277V	AC100-277V	AC100-277V
Frequency Range	50Hz-60Hz	50Hz-60Hz	50Hz-60Hz	50Hz-60Hz
Color Rendering Index	>80	>80	>80	>80
Power Factor	>0.95	>0.95	>0.95	>0.95
Color Temperature	3000K - 6500K	3000K - 6500K	3000K - 6500K	3000K - 6500K
Beam Angle	15/30/45/60/90°	15/30/45/60/90°	15/30/45/60/90°	15/30/45/60/90°
Temperature in Working	(-)30°C~ (+)50°C	(-)30°C~ (+)50°C	(-)30°C~ (+)50°C	(-)30°C~ (+)50°C
Driver	MEANWELL (ELG Series)	MEANWELL (ELG Series)	MEANWELL (ELG Series)	MEANWELL (ELG Series)
Size	406x430x138mm	568x460x143mm	815x460x138mm	1055x460x143mm
Protection Grade	IP66	IP66	IP66	IP66
Life Span	50000 - 60000Hrs			



250W/300W



500W/600W

★ 300W MODULE

Product Code	BFL01-300W	BFL01-600W	BFL01-900W	BFL01-1200W
Rated Power	300W LED	600W LED	900W LED	1200W LED
LED Module	Philips, SMD3030 1x300W	Philips, SMD3030 2x300W	Philips, SMD3030 3x300W	Philips, SMD3030 4x300W
Luminous Flux	135lm/W	135lm/W	135lm/W	135lm/W
Input Voltage	AC100-277V	AC100-277V	AC100-277V	AC100-277V
Frequency Range	50Hz-60Hz	50Hz-60Hz	50Hz-60Hz	50Hz-60Hz
Color Rendering Index	>80	>80	>80	>80
Power Factor	>0.95	>0.95	>0.95	>0.95
Color Temperature	3000K - 6500K	3000K - 6500K	3000K - 6500K	3000K - 6500K
Beam Angle	15/30/45/60/90°	15/30/45/60/90°	15/30/45/60/90°	15/30/45/60/90°
Temperature in Working	(-)30°C~ (+)50°C	(-)30°C~ (+)50°C	(-)30°C~ (+)50°C	(-)30°C~ (+)50°C
Driver	MEANWELL (ELG Series)	MEANWELL (ELG Series)	MEANWELL (ELG Series)	MEANWELL (ELG Series)
Size	406x430x138mm	568x460x143mm	815x460x138mm	1055x460x143mm
Protection Grade	IP66	IP66	IP66	IP66
Life Span	50000 - 60000Hrs			

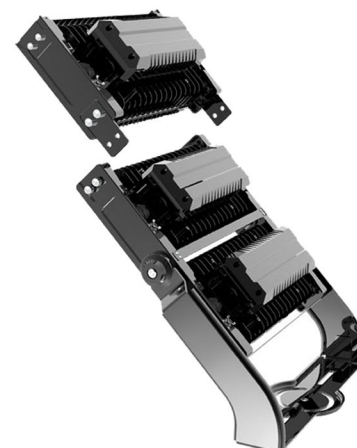
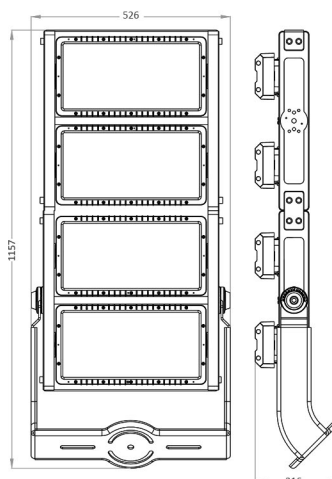


750W/900W



1000W/1200W

BFL01-1000/1200



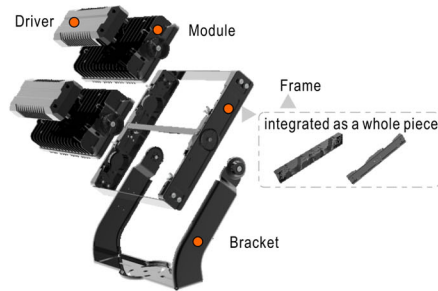


Structural Details

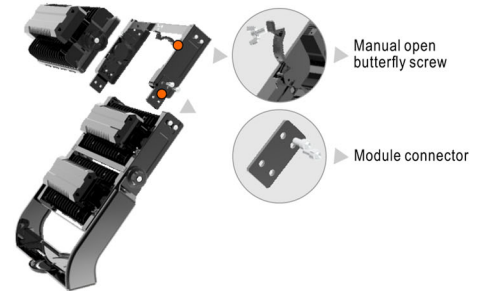
Dia-cast aluminum (all components)
heavy-duty & reliable



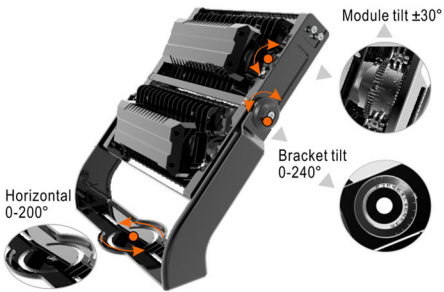
Integrated Treatment
Simplified into 4 parts



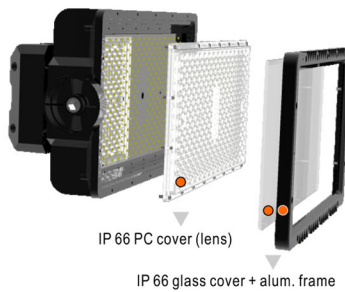
Modularized design
Flexible combination for SKD business



Independent tilt adjustments
to facilitate installation



2-in-1 cover
IP 66 PC +/- IP 66 tempered glass



Visor optional, to minimize
light interference to surrounding areas



Photometric Data

