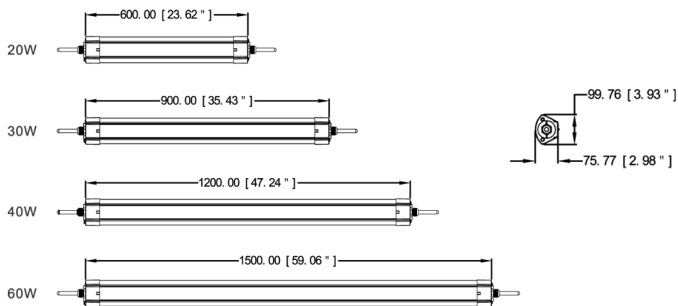
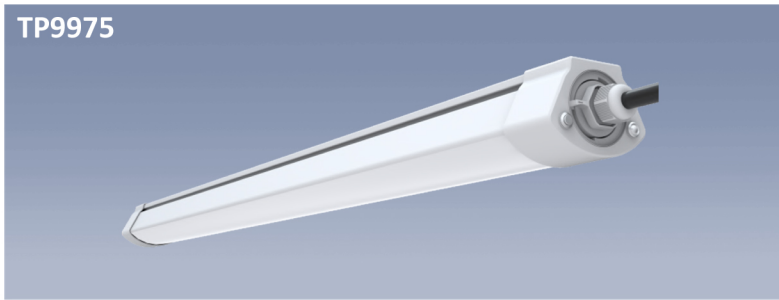




TP9975



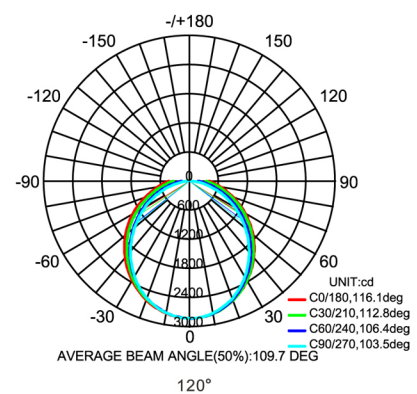
Model:	TP9975-20	TP9975-30	TP9975-40	TP9975-60
Power	20W LED	30W LED	40W LED	60W LED
LED Type	SMD 2835	SMD 2835	SMD 2835	SMD 2835
Input Voltage	AC100-277V 50/60Hz			
CRI	≥80	≥80	≥80	≥80
Luminous Flux	120LM/W	120LM/W	120LM/W	120LM/W
Color Temp.	3000-6500K	3000-6500K	3000-6500K	3000-6500K
Power Factor	>0.95	>0.95	>0.95	>0.95
Operating Temp.	-20°C +50°C	-20°C +50°C	-20°C +50°C	-20°C +50°C
Storage Temp.	-40°C +80°C	-40°C +80°C	-40°C +80°C	-40°C +80°C
Beam Angle	120°	120°	120°	120°
Dimension	600x99x75mm	900x99x75mm	1200x99x75mm	1500x99x75mm
Life Span	45000 - 50000Hrs			



DESCRIPTION:

Surface mounted LED Triproof luminaire,
 Body made of pressed sheet steel in white finish with Polycarbonate end cap, epoxy cationic electro-coating upon phospho-chromate treatment, Uv-stabilising primer. Diffuser in vandal resistant, V2 Self extinguishing, UV-stabilized polycarbonate prismatic faceting inside. High corrosion resistance capability. Silicon rubber gasket for dust and waterproof High efficient LED Easy installation and maintenance Stainless steel alloy screws Power supply: AC100V-277V/60Hz
 - Heat resistant and solid conduct wiring
 - Ideal for External and Internal lighting
 - European standard of EN 60598

Photometric Data



Installation

P1 Non-Linkable TP



P2 Linkable TP



P3 Emergency TP, 1/3 power Working @2Hrs



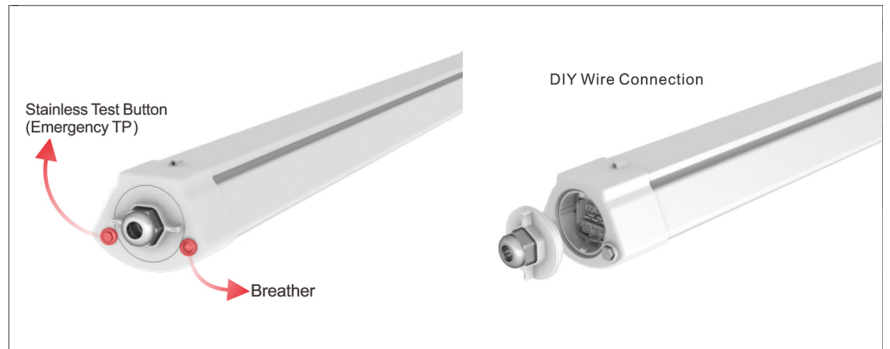
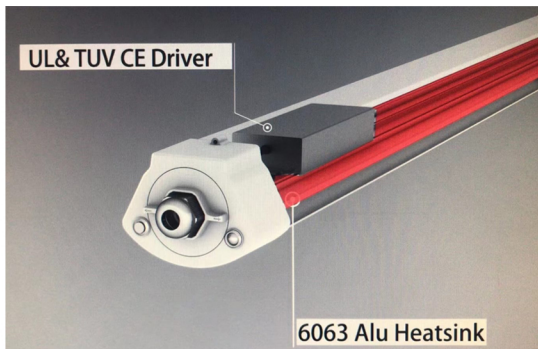
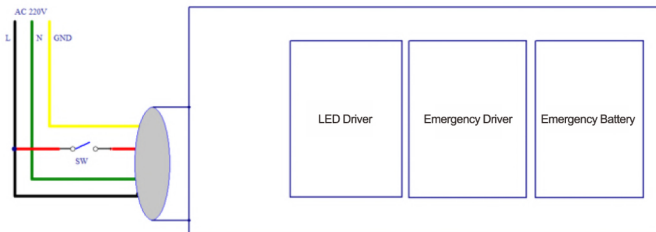
P4 Motion Sensor TP (With 0-10V dimmable driver)



Motion Sensor



LED emergency lights external wiring diagram



DIY Wire Connection

