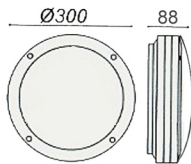


WML041A



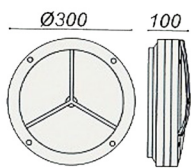
DESCRIPTION:

Surface wall / ceiling mounted weatherproof bulkhead luminaire,
 Body made of die-cast aluminium with polyester powder coated Finish. Epoxy cationic electro-coating, upon phospho-chromate Treatment, Uv-stabilising primer.
 Diffuser made of vandal resistant, V2 self extinguishing, Uv-stabilised polycarbonate.
 Reflector made of anodized aluminium
 Silicon gasket for dust and waterproof
 Stainless steel alloy screws
 Power supply: 240V/50Hz

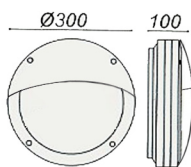
- Heat resistant and solid conduct wiring
- Ideal for external lighting, facade lighting
- European standard of EN 60598



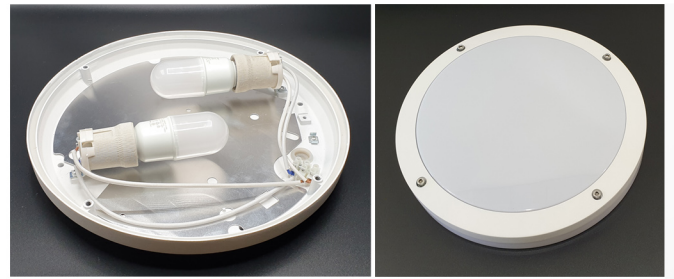
WML041B



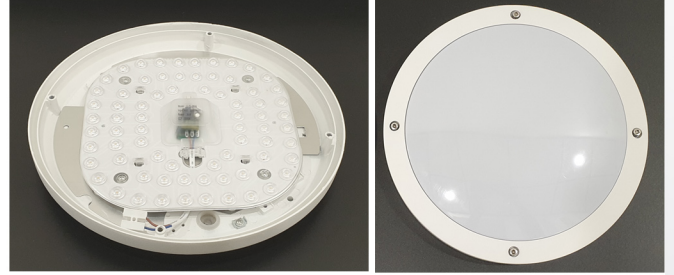
WML041C



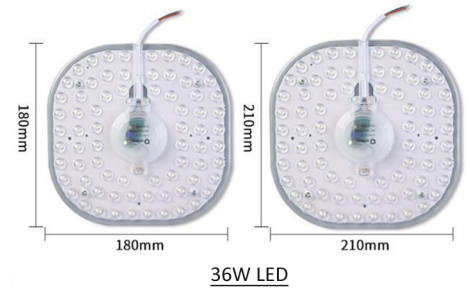
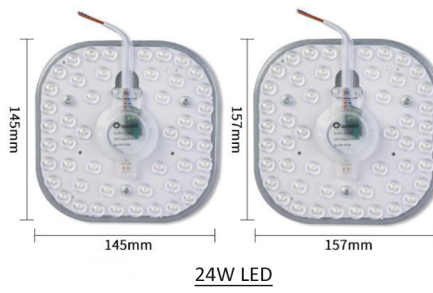
Product Code	WML041A	WML041B	WML041C
Rated Power	18W LED	18W LED	18W LED
	24W LED	24W LED	24W LED
	36W LED	36W LED	24W LED
LED Type	SMD	SMD	SMD
Product Size	DIA: 300x80mm	DIA: 300x80mm	DIA: 300x80mm
Input Voltage	AC220V	AC220V	AC220V
Frequency Range	50Hz-60Hz	50Hz-60Hz	50Hz-60Hz
Power Factor	>0.95	>0.95	>0.95
Color Temperature	2700K-6500K	2700K-6500K	2700K-6500K
Color Rendering Index	>80	>80	>80
Mini Luminous Flux	130LM/W	130LM/W	130LM/W
Beam Angle	120°	120°	120°
Protection Grade	IP65	IP65	IP65
Life Span		50000Hrs	
E27 Retrofit Version	1x10W LED	1x10W LED	1x10W LED
	1x12W LED	1x12W LED	1x12W LED
	2x10W LED	2x10W LED	2x10W LED
	2x12W LED	2x12W LED	2x12W LED



Retrofit Version



LED Module Version



PHOTOMETRIC DATA

