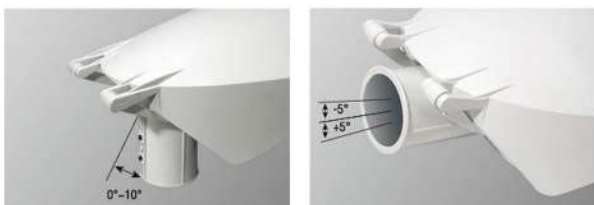
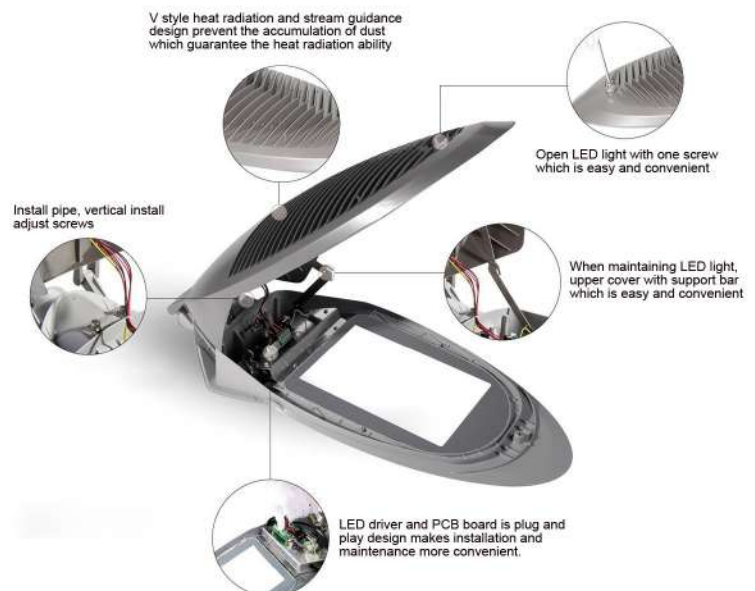
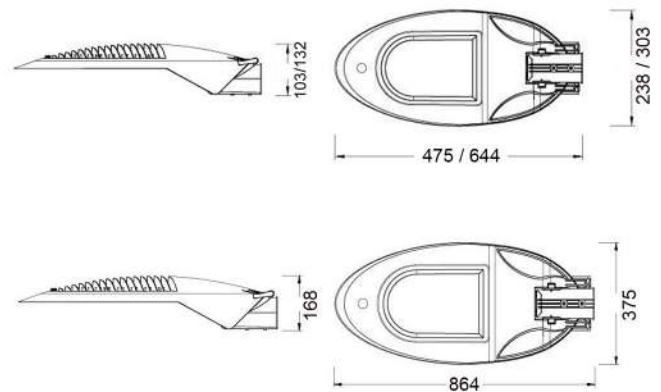




DESCRIPTION:

Pole mounted lantern made of die-cast aluminium with polyester powder coating applied after a phosphochromate treatment, resistant to corrosive and saline environments.
 Reflector made of white fiber glass with builtin LED, Uv - stabilized.
 Diffuser made of tempered glass, resistant to impact and thermal shock.
 (UNI7142 test, British standard 3193)
 Environmental friendly silicon gasket for protection scale, IP65
 High quality electronic LED Drive
 Power supply: 220V-240V, 50-60Hz
 - Heat resistant wiring
 - European standard of EN 60598



When vertical install LED light, adjust angle is from 0-10°
 When horizontal install LED light, adjust angle is ±5°

POWER : 30W - 175W LED

TECHNICAL DATA :



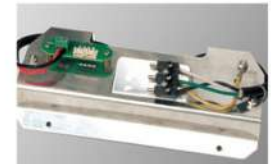
Product Code	JRA2-30-40LED	JRA2-50-60LED	JRA2-70-80LED
LED Quantity	24PCS	32PCS	54PCS
Rated Power	30-40W	50-60W	70-80W
Input Voltage	AC100-227V	AC100-227V	AC100-227V
Frequency Range	50Hz-60Hz	50Hz-60Hz	50Hz-60Hz
Power Factor	>0.9	>0.9	>0.9
THD	<20%	<20%	<20%
Color Temperature	6500K/4000K/3000K	6500K/4000K/3000K	6500K/4000K/3000K
Color Rendering Index	>90	>90	>90
Lighting Angle	65-135°	65-135°	65-135°
Mini Luminous Flux	100LM/W	100LM/W	100LM/W
Temperature in Working Condition	(-35)-50°	(-35)-50°	(-35)-50°
Life	>45000-50000Hrs	>45000-50000Hrs	>45000-50000Hrs
Protection Grade	IP65	IP65	IP65
Installation Pipe Diameter	>48/60mm	>48/60mm	>48/60mm
Dimension	475x238x103mm	644x303x132mm	644x303x132mm
Gross (Kg)	4.50Kg	6.75Kg	7.08Kg
Packing size (mm)	537*303*132cm	706*356*180cm	706*356*180cm



A key type screw assembly, lamps and lanterns is simple, convenient maintenance open



V style finned heat sink prevent the dust and other matters from stacking on the back.

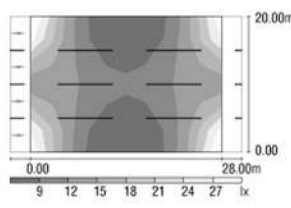
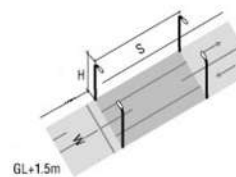
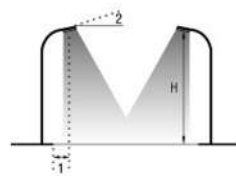


Plug design for the light source, power supply and external wires, easy for your installation and maintenance

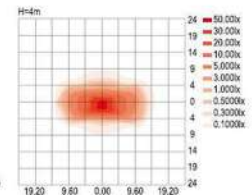
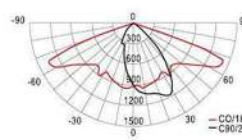


Lamps and lanterns maintenance, cover open using special support defense shedding structure design, more humane

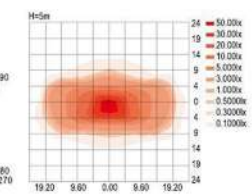
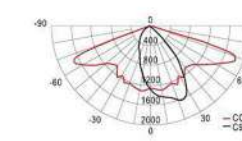
Simulation for lighting on road (60W)	
Road width	20
Distance	28
Height	8.1
Forward	0.5
Angle	10
Maintenance Rate	0.8
Average Illumins	12
Max Illumins	23
Min Illumins	6.83
Uniformity of road surface Illuminance	0.557
Average lumen	0.68
Over Uniformity	0.6
Longitudinal Uniformity	0.7
Threshold Increment	9%
Surround Illumins Coefficient	0.4



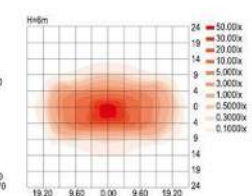
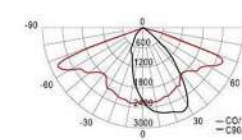
JRA2-30-40LED



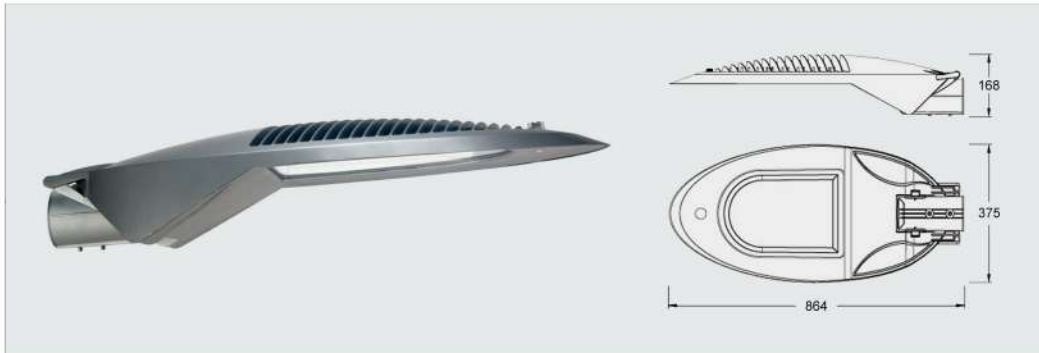
JRA2-50-60LED



JRA2-70-80LED



TECHNICAL DATA :



Product Code	JRA2-100LED	JRA2-125LED	JRA2-150LED
LED Quantity	96PCS	112PCS	96PCS
Rated Power	100W	125W	150W
Input Voltage	AC100-227V	AC100-227V	AC100-227V
Frequency Range	50Hz-60Hz	50Hz-60Hz	50Hz-60Hz
Power Factor	>0.9	>0.9	>0.9
THD	<20%	<20%	<20%
Color Temperature	6500K/4000K/3000K	6500K/4000K/3000K	6500K/4000K/3000K
Color Rendering Index	>90	>90	>90
Lighting Angle	65-135°	65-135°	65-135°
Mini Luminous Flux	100LM/W	100LM/W	100LM/W
Temperature in Working Condition	(-35)-50°	(-35)-50°	(-35)-50°
Life	>45000-50000Hrs	>45000-50000Hrs	>45000-50000Hrs
Protection Grade	IP65	IP65	IP65
Installation Pipe Diameter	>60/70mm	>60/70mm	>60/70mm
Dimension	864x375x168mm	864x375x168mm	864x375x168mm
Gross (Kg)	12.93Kg	12.93Kg	12.93Kg
Packing size (mm)	990*418*230cm	990*418*230cm	990*418*230cm



A key type screw assembly, lamps and lanterns is simple, convenient maintenance open



V style finned heat sink prevent the dust and other matters from stacking on the back.



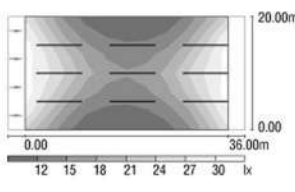
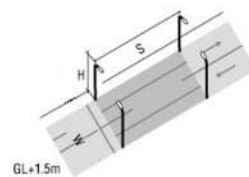
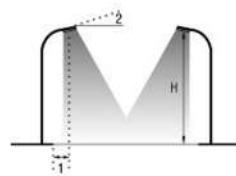
Plug design for the light source, power supply and external wires, easy for your installation and maintenance



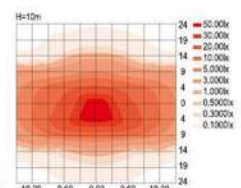
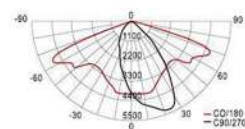
Lamps and lanterns maintenance, cover open using special support defense shedding structure design, more humane

Simulation for lighting on road (120W)

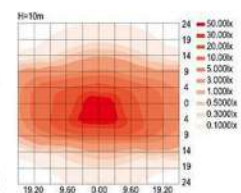
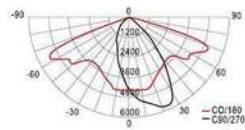
Road width	20
Distance	36
Height	11
Forward	1
Angle	10
Maintenance Rate	0.8
Average Illumins	18
Max Illumins	30
Min Illumins	9.88
Uniformity of road surface Illuminance	0.537
Average lumen	1.0
Over Uniformity	0.6
Longitudinal Uniformity	0.7
Threshold Increment	7%
Surround Illumins Coefficient	0.5



JRA2-100LED



JRA2-125LED



JRA2-150LED

