

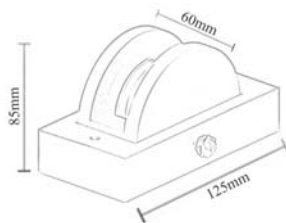
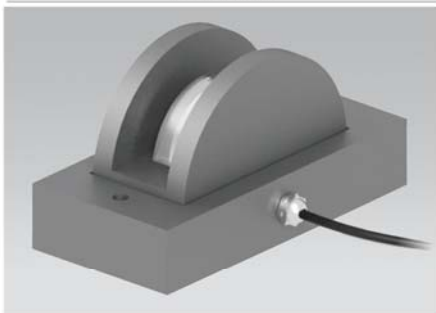


DESCRIPTION:

Surface mounted super narrow LED Window luminaire,
 Body made of die-cast aluminium, aluminium alloy with Polyester powder coated finish.
 Epoxy cationic electro-coating, upon phospho-chromate treatment, Uv-stabilising primer.
 Narrow beam angle with high strength aluminium alloy and Tempered clear glass cover.
 High efficiency LED driver
 Corrosion resistance capability.
 Silicon rubber gasket for dust and waterproof
 High efficient CREE / EPSTAR / PHILIPS LED
 Stainless steel alloy screws
 Power supply: 165V-240V/60Hz
 - Heat resistant and solid conduct wiring
 - Ideal for indoor and outdoor lighting
 - European standard of EN 60598



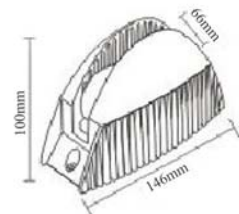
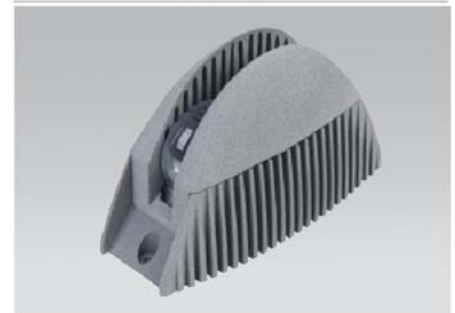
BLWL-04



BLWL-05



BLWL-06



| Model: | BLWL-04 | BLWL-05 | BLWL-06 |
|------------------|-------------|-------------|--------------|
| Power | 3x2W LED | 6W LED | 12W LED |
| Input Voltage | AC220V | AC220V | AC220V |
| CRI | ≥80 | ≥80 | ≥80 |
| Luminous Flux | 100LM/W | 100LM/W | 100LM/W |
| Color Temp. | 2700-6500K | 2700-6500K | 2700-6500K |
| Power Factor | >0.95 | >0.95 | >0.95 |
| Temp. in Working | -30°C +50°C | -20°C +50°C | -20°C +50°C |
| Humidity | <95% | <95% | <95% |
| Beam Angle | 180° | 180° | 180° |
| Dimension | 125x60x85mm | 173x42x90mm | 146x66x100mm |
| Life Span | 50000Hrs | | |

PHOTMETRIC DATA:

