

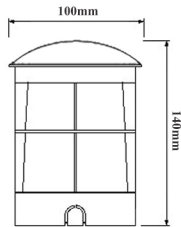


DESCRIPTION:

- Recessed mounted directional pathway luminaire,
- Body & Frame made of solid stainless steel (A2 = 316)
- Tempered clear / frosted glass diffuser
- High corrosion resistance capability.
- Stainless steel gland
- Recessed sleeve for easy installation.
- Silicon gasket for dust and water proofing
- Stainless steel alloy screws
- Power supply: 220V-240V/50Hz
- Heat resistant and solid conduct wiring
- Ideal for External use
- European standard of EN 60598



RDSX-21



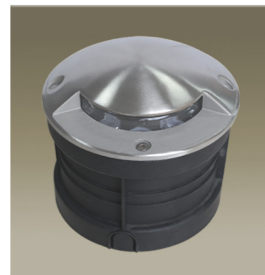
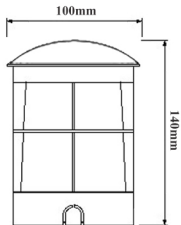
Available:



POWER : Max 7W HP LED / 240V
 : Max 8W HP LED / 12V
 (Drive Recommended for 12V application)



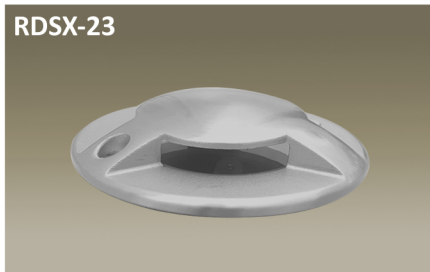
RDSX-22



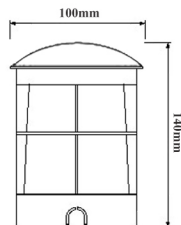
RDSX-21



RDSX-22



RDSX-23



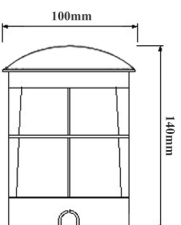
RDSX-23



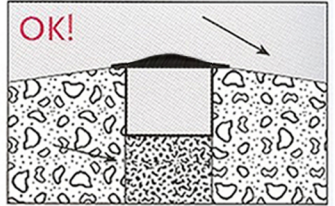
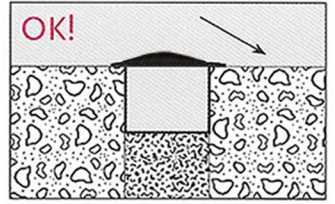
RDSX-24



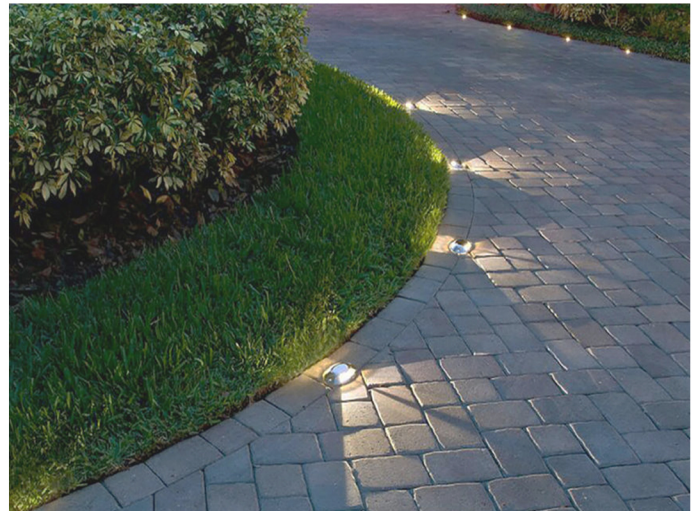
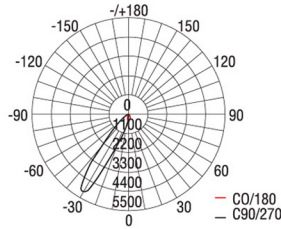
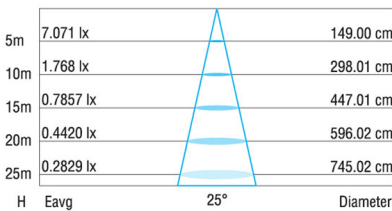
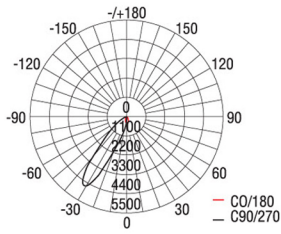
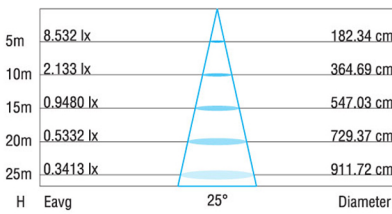
RDSX-24



Product Code	RDSX-21	RDSX-22	RDSX-23	RDSX-24
Rated Power	4.5W - 7W LED	4.5W - 7W LED	4.5W - 7W LED	4.5W - 7W LED
LED Type	HP LED	HP LED	HP LED	HP LED
Product Size	100x100x140mm	100x100x140mm	100x100x140mm	100x100x140mm
Input Voltage	AC85-265V	AC85-265V	AC85-265V	AC85-265V
Frequency Range	50Hz-60Hz	50Hz-60Hz	50Hz-60Hz	50Hz-60Hz
Power Factor	>0.90	>0.90	>0.90	>0.90
THD	<20%	<20%	<20%	<20%
Color Temperature	2700K - 6500K	2700K - 6500K	2700K - 6500K	2700K - 6500K
Color Rendering Index	>80	>80	>80	>80
Mini Luminous Flux	100LM/W	100LM/W	100LM/W	100LM/W
Temp. in Working	(-)20°C- (+)50°C	(-)20°C- (+)50°C	(-)20°C- (+)50°C	(-)20°C- (+)50°C
Humidity of working Condition	<85%	<85%	<85%	<85%
Protection Grade	IP67	IP67	IP67	IP67
Life Span	40000 - 50000Hrs			



PHOTMETRIC DATA



INSTALLATION:

1. Install the sleeve

2. Connect Power

3. Complete Installation

Max 1500KG

Integrated LED layout:

Parallel connecting diagram