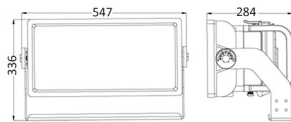
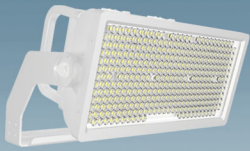
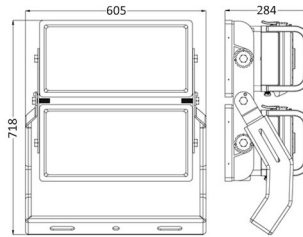




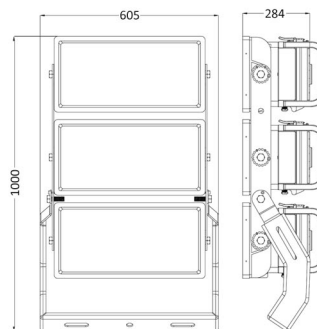
SZFL001-5050



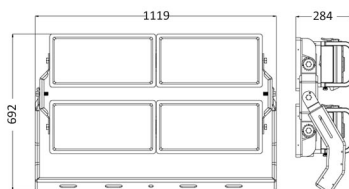
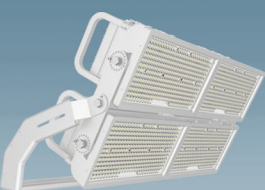
SZFL002-5050



SZFL003-5050



SZFL004-5050



DESCRIPTION:

Heavy duty floodlight luminaire for multipurpose use
Body made of die-cast aluminium with polyester powder coated finish.

Epoxy cationic electro-coating, upon phospho-chromate treatment, Uv-stabilising primer.

Diffuser made of tempered glass, thermal shock and impact resistant.

Adjustable mounting bracket

Stainless steel cable gland

High corrosion resistant capability

High quality LED Chip Philips (Lumileds) SMD5050

- Heat resistant and solid conduct wiring

- Ideal for sports field and industrial use

- European standard of EN 60598



LUMILEDS SMD5050

Greater than 185lm/W high efficacy, illumination grade LED light source.



HIGH-END LED DRIVER

HLG Series
ELG Series



Available:



★ SINGLE MODULE

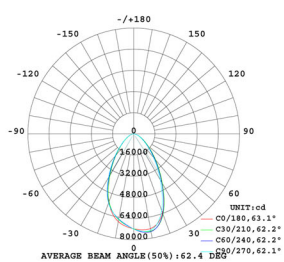
Product Code	SZFL001-5050-400W	SZFL001-5050-500W	SZFL001-5050-650W	SZFL001-5050-800W
Rated Power	400W LED	500W LED	650W LED	800W LED
LED Module	LUMILEDS SMD5050 1x400W	LUMILEDS SMD5050 1x500W	LUMILEDS SMD5050 1x650W	LUMILEDS SMD5050 1x800W
Luminous Flux	185lm/W	185lm/W	185lm/W	185lm/W
Input Voltage	AC100-277V / 50-60Hz	AC100-277V / 50-60Hz	AC100-277V / 50-60Hz	AC100-277V / 50-60Hz
Color Rendering Index	>80	>80	>80	>80
Power Factor	>0.95	>0.95	>0.95	>0.95
Efficiency	>92%	>92%	>92%	>92%
THD	<15%	<15%	<15%	<15%
Color Temperature	3000K - 6500K	3000K - 6500K	3000K - 6500K	3000K - 6500K
Beam Angle	30° / 45° / 60°	30° / 45° / 60°	30° / 45° / 60°	30° / 45° / 60°
Temperature in Working	-20 ~ +50°C	-20 ~ +50°C	-20 ~ +50°C	-20 ~ +50°C
Driver	Meanwell / Inventronics / Sosen / Lifud	Meanwell / Inventronics / Sosen / Lifud	Meanwell / Inventronics / Sosen / Lifud	Meanwell / Inventronics / Sosen / Lifud
Size	547 x 336 x 284mm	547 x 336 x 284mm	547 x 336 x 284mm	547 x 336 x 284mm
Protection Grade	IP66	IP66	IP66	IP66
Life Span	50000Hrs			

★ DOUBLE MODULE

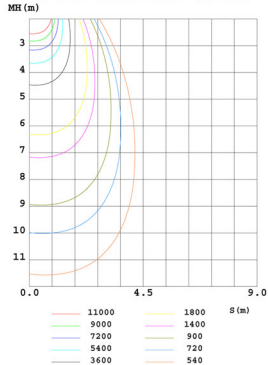
Product Code	SZFL002-5050-800W	SZFL002-5050-1000W	SZFL002-5050-1300W	SZFL002-5050-1600W
Rated Power	800W LED	1000W LED	1300W LED	1600W LED
LED Module	LUMILEDS SMD5050 2x400W	LUMILEDS SMD5050 2x500W	LUMILEDS SMD5050 2x650W	LUMILEDS SMD5050 2x800W
Luminous Flux	185lm/W	185lm/W	185lm/W	185lm/W
Input Voltage	AC100-277V / 50-60Hz	AC100-277V / 50-60Hz	AC100-277V / 50-60Hz	AC100-277V / 50-60Hz
Color Rendering Index	>80	>80	>80	>80
Power Factor	>0.95	>0.95	>0.95	>0.95
Efficiency	>92%	>92%	>92%	>92%
THD	<15%	<15%	<15%	<15%
Color Temperature	3000K - 6500K	3000K - 6500K	3000K - 6500K	3000K - 6500K
Beam Angle	30° / 45° / 60°	30° / 45° / 60°	30° / 45° / 60°	30° / 45° / 60°
Temperature in Working	-20 ~ +50°C	-20 ~ +50°C	-20 ~ +50°C	-20 ~ +50°C
Driver	Meanwell / Inventronics / Sosen / Lifud	Meanwell / Inventronics / Sosen / Lifud	Meanwell / Inventronics / Sosen / Lifud	Meanwell / Inventronics / Sosen / Lifud
Size	605 x 718 x 284mm	605 x 718 x 284mm	605 x 718 x 284mm	605 x 718 x 284mm
Protection Grade	IP66	IP66	IP66	IP66
Life Span	50000Hrs			

Photometric Data

LUMINOUS INTENSITY DISTRIBUTION DIAGRAM



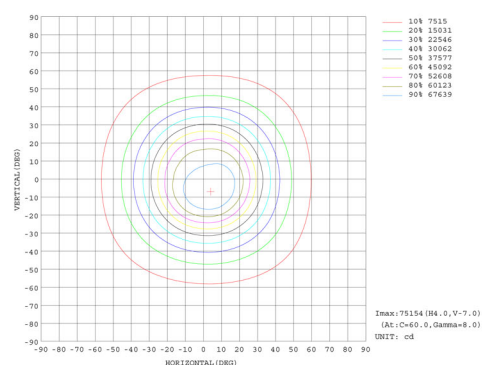
C0 PLANE ISOLUX DIAGRAM (UNIT:lx)



C Range: 0 - 360DEG
C Interval: 30.0DEG
Test Speed: HIGH
Temperature: 25.3DEG

y Range: 0 - 90DEG
y Interval: 1.0DEG
Humidity: 65.0%
Test Distance: 7.440m [K=1.0000]

Isocandela Diagram



C Range: 0 - 360DEG
C Interval: 30.0DEG
Test Speed: HIGH
Temperature: 25.3DEG

y Range: 0 - 90DEG
y Interval: 1.0DEG
Humidity: 65.0%
Test Distance: 7.440m [K=1.0000]

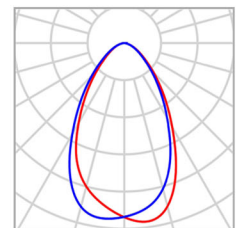
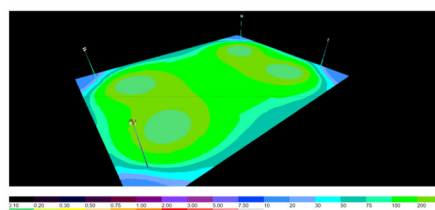
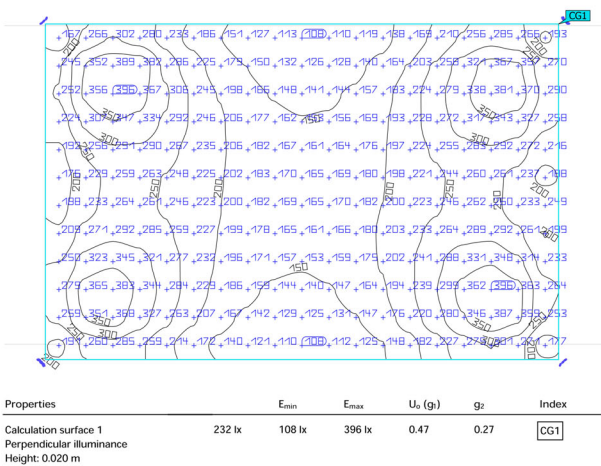
★ THREE MODULE

Product Code	SZFL003-5050-1200W	SZFL003-5050-1500W	SZFL003-5050-1950W	SZFL003-5050-2400W
Rated Power	1200W LED	1500W LED	1950W LED	2400W LED
LED Module	LUMILEDS SMD5050 3x400W	LUMILEDS SMD5050 3x500W	LUMILEDS SMD5050 3x650W	LUMILEDS SMD5050 3x800W
Luminous Flux	185lm/W	185lm/W	185lm/W	185lm/W
Input Voltage	AC100-277V / 50-60Hz	AC100-277V / 50-60Hz	AC100-277V / 50-60Hz	AC100-277V / 50-60Hz
Color Rendering Index	>80	>80	>80	>80
Power Factor	>0.95	>0.95	>0.95	>0.95
Efficiency	>92%	>92%	>92%	>92%
THD	<15%	<15%	<15%	<15%
Color Temperature	3000K - 6500K	3000K - 6500K	3000K - 6500K	3000K - 6500K
Beam Angle	30° / 45° / 60°	30° / 45° / 60°	30° / 45° / 60°	30° / 45° / 60°
Temperature in Working	-20 ~ + 50°C	-20 ~ + 50°C	-20 ~ + 50°C	-20 ~ + 50°C
Driver	Meanwell / Inventronics / Sosen / Lifud	Meanwell / Inventronics / Sosen / Lifud	Meanwell / Inventronics / Sosen / Lifud	Meanwell / Inventronics / Sosen / Lifud
Size	605 x 1000 x 284mm	605 x 1000 x 284mm	605 x 1000 x 284mm	605 x 1000 x 284mm
Protection Grade	IP66	IP66	IP66	IP66
Life Span	50000Hrs			

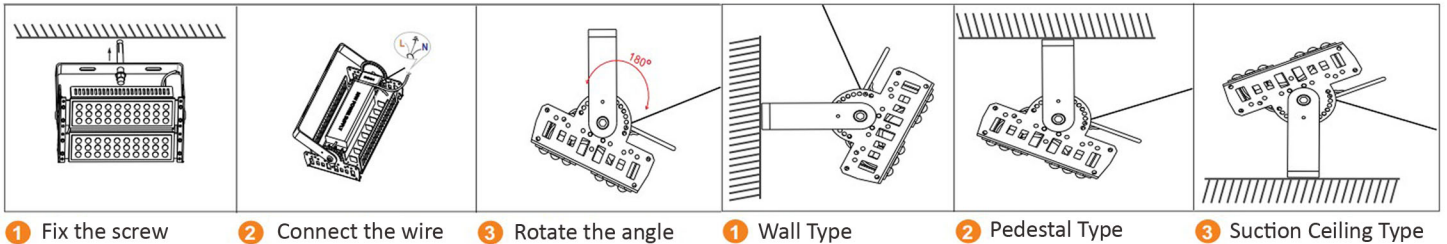
★ FOUR MODULE

Product Code	SZFL004-50501600W	SZFL004-5050-2000W	SZFL004-5050-2600W	SZFL004-5050-3200W
Rated Power	1600W LED	2000W LED	2600W LED	3200W LED
LED Module	LUMILEDS SMD5050 4x400W	LUMILEDS SMD5050 4x500W	LUMILEDS SMD5050 4x650W	LUMILEDS SMD5050 4x800W
Luminous Flux	185lm/W	185lm/W	185lm/W	185lm/W
Input Voltage	AC100-277V / 50-60Hz	AC100-277V / 50-60Hz	AC100-277V / 50-60Hz	AC100-277V / 50-60Hz
Color Rendering Index	>80	>80	>80	>80
Power Factor	>0.95	>0.95	>0.95	>0.95
Efficiency	>92%	>92%	>92%	>92%
THD	<15%	<15%	<15%	<15%
Color Temperature	3000K - 6500K	3000K - 6500K	3000K - 6500K	3000K - 6500K
Beam Angle	30° / 45° / 60°	30° / 45° / 60°	30° / 45° / 60°	30° / 45° / 60°
Temperature in Working	-20 ~ + 50°C	-20 ~ + 50°C	-20 ~ + 50°C	-20 ~ + 50°C
Driver	Meanwell / Inventronics / Sosen / Lifud	Meanwell / Inventronics / Sosen / Lifud	Meanwell / Inventronics / Sosen / Lifud	Meanwell / Inventronics / Sosen / Lifud
Size	1119 x 692 x 284mm	1119 x 692 x 284mm	1119 x 692 x 284mm	1119 x 692 x 284mm
Protection Grade	IP66	IP66	IP66	IP66
Life Span	50000Hrs			

Lux Calculation



Pics	Model	Demension (mm) Material ADC12	Power (±5%)	Power Factor	Beam Angle (Lens)	Lumen (±5%)	Color Temperature	CRI	LED
	SZFL001-5050-400W	547*336*284	400W	>0.95	30°/45°/60°	185LM/W	4000K / 5000K / 5700K / 6500K	>80RA	Lumileds 5050
	SZFL001-5050-500W	547*336*284	500W			180LM/W			
	SZFL001-5050-650W	547*336*284	650W			170LM/W			
	SZFL001-5050-800W	547*336*284	800W			155LM/W			
	SZFL002-5050-800W	605*718*284	800W		30°/45°/60°	185LM/W			Lumileds 5050
	SZFL002-5050-1000W	605*718*284	1000W			180LM/W			
	SZFL002-5050-1300W	605*718*284	1300W			170LM/W			
	SZFL002-5050-1600W	605*718*284	1600W			155LM/W			
	SZFL003-5050-1200W	605*1000*284	1200W		30°/45°/60°	185LM/W			Lumileds 5050
	SZFL003-5050-1500W	605*1000*284	1500W			180LM/W			
	SZFL003-5050-2000W	605*1000*284	2000W			170LM/W			
	SZFL003-5050-2400W	605*1000*284	2400W			155LM/W			
	SZFL004-5050-1600W	1119*692*284	1600W		30°/45°/60°	185LM/W			Lumileds 5050
	SZFL004-5050-2000W	1119*692*284	2000W			180LM/W			
	SZFL004-5050-2600W	1119*692*284	2600W			170LM/W			
	SZFL004-5050-3200W	1119*692*284	3200W			155LM/W			



SPD 10KV	Glass + Ring	PC Lens	Visor	Laser Aiming Device

