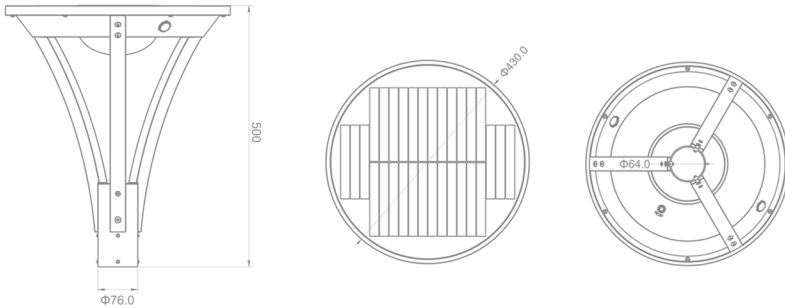


BR-SOL430



Battery indicator

- 10%—30%
- 30%—70%
- 70%+



DESCRIPTION:

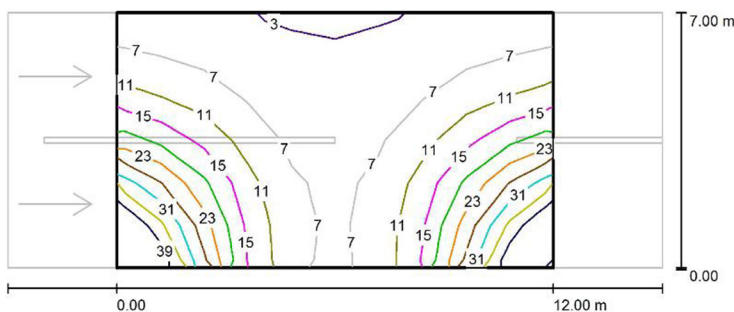
Solar powered decorative lighting Pole,
 Made of die-cast aluminium with polyester powder coated finish.
 Epoxy cationic electro-coating, upon phospho-chromate treatment, Uv-stabilising primer.
 Reflector made of anodized aluminium
 Diffuser made of polycarbonate, wide beam lens
 High corrosion resistant capability
 silicon rubber gasket for dust & waterproof
 Stainless steel alloy screws
 - Heat resistant and solid conduct wiring
 - Ideal for external lighting
 - European standard of EN 60598

POLE:

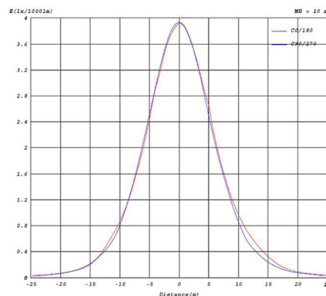
Column made of Hot Deep Galvanized steel with epoxy cationic eletro-coating, upon phospho-chromate treatment, Uv-stabilising primer.
 Extruded aluminium pole available on request.

PHOTMETRIC DATA

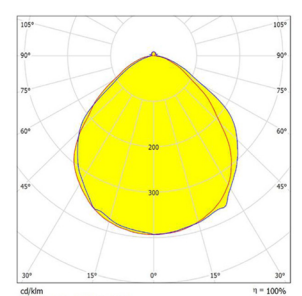
Road simulated Diagram



Illumination Curve



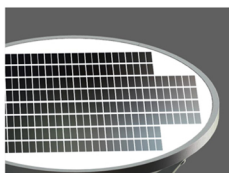
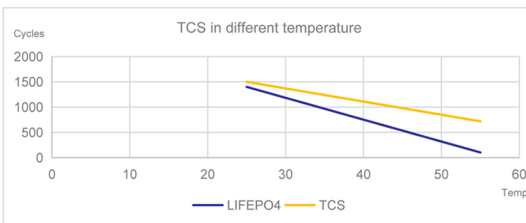
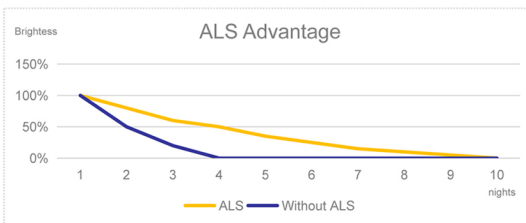
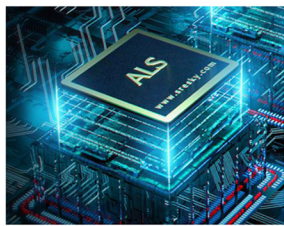
Luminance Distribution



Product Code	BRSOL430-15	BRSOL430-20	BRSOL430-25	BRSOL430-30
Rated Power	15W LED	20W LED	25W LED	30W LED
Luminous Flux	1500LM	2000LM	2500LM	3000LM
LED Type	3030 - OSRAM, 42pcs	3030 - OSRAM, 42pcs	3030 - OSRAM, 42pcs	3030 - OSRAM, 42pcs
Solar Panel	16.2V / 18.75W, Monocrystalline	16.2V / 18.75W, Monocrystalline	16.2V / 18.75W, Monocrystalline	16.2V / 18.75W, Monocrystalline
Battery	Li-ion	Li-ion	Li-ion	Li-ion
Capacity	3.7V 115.44WH 2.6AH/PC	3.7V 115.44WH 2.6AH/PC	3.7V 115.44WH 2.6AH/PC	3.7V 115.44WH 2.6AH/PC
Working Temperature	0 ~ 55°C / -20 ~ + 60°C	0 ~ 55°C / -20 ~ + 60°C	0 ~ 55°C / -20 ~ + 60°C	0 ~ 55°C / -20 ~ + 60°C
Charging Time	6 - 7Hrs	6 - 7Hrs	6 - 7Hrs	6 - 7Hrs
Working Time in Rainyday	10 days	10 days	10 days	10 days
Efficiency	190LM/W	190LM/W	190LM/W	190LM/W
Color Temperature	3000 - 6000K	3000 - 6000K	3000 - 6000K	3000 - 6000K
CRI	>80	>80	>80	>80
PIR	120°, 8M	120°, 8M	120°, 8M	120°, 8M
Control Mode	Button Switch, ON/OFF Long Press 1.5s			
Lighting Mode (Remote Control)	M1: 15% + PIR (ALS2.4), M2: 30% 5Hrs +15% Till dawn (PIR ALS2.4), M3: 35% Till dawn			
Mode Indication	M1: Red / M2: Green / M3: Orange, The mode indicator will change to the better Indicator after 5 seconds			
Capacity Indication	Green Light: >70%, Orange Light: 30%~ 70%, Red Light: <30%			
Core Technology	ALS2.4 / TCS1.0	ALS2.4 / TCS1.0	ALS2.4 / TCS1.0	ALS2.4 / TCS1.0
Installation	3M - 3.5M	3M - 3.5M	3M - 3.5M	3M - 3.5M
Protection	IP65 / IK08	IP65 / IK08	IP65 / IK08	IP65 / IK08
Life Span	50000Hrs			

*Hybrid version available on request

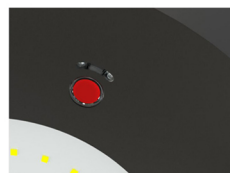
CORE TECHNOLOGY



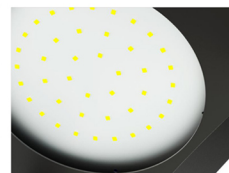
Solar Charging Efficiency > 21%



Bracket



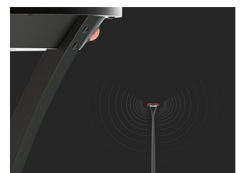
Indicator, IR Receiver switch



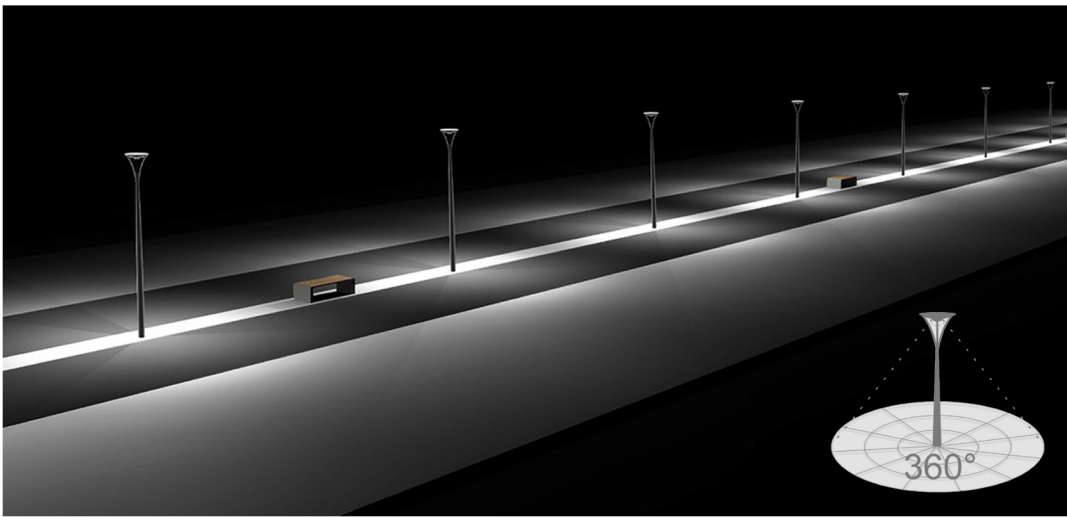
High lumen LEDs, 190lm/W
Large Lamp Shade ϕ 115mm



PIR: >5m, 120

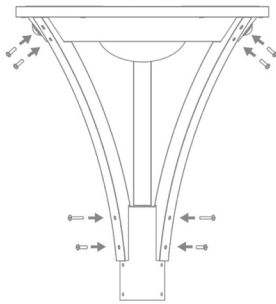


2 PIR Motion Sensor
Sensing Angle 120°

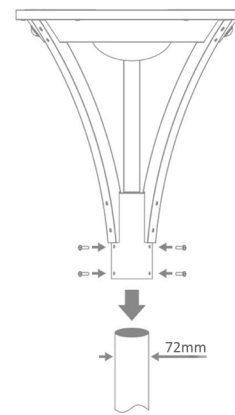


INSTALLATION

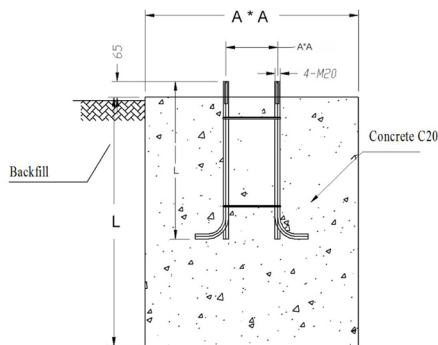
1. Use the supplied screws to fix the bracket on the lamp.



2. Use the supplied screws to fix the lamp on the Pole.



3. Dig a hole according to the size of the foundation cage, put the foundation cage into the hole and fix it with concrete C20.



4. Lift the lamp pole by the person or machine, align the bottom flange of the lamp Pole with the foundation cage, and then fix the lamp Pole with screws.

