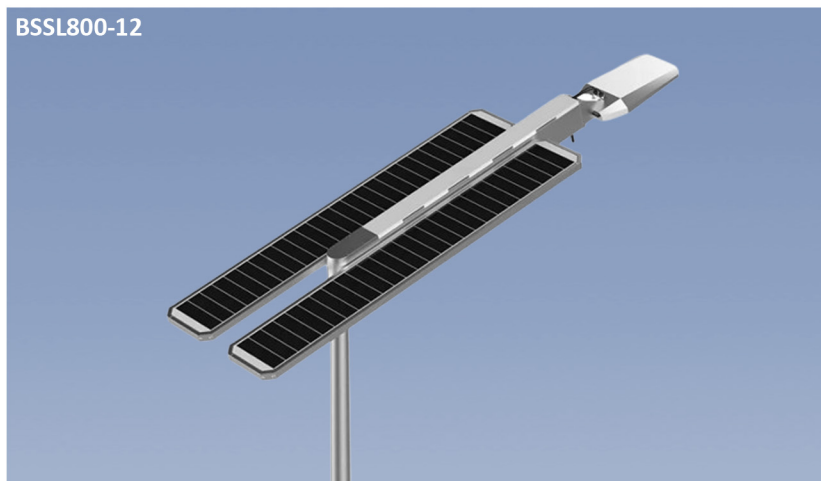


MODEL: BSSL800



BSSL800-12



**DESCRIPTION:**

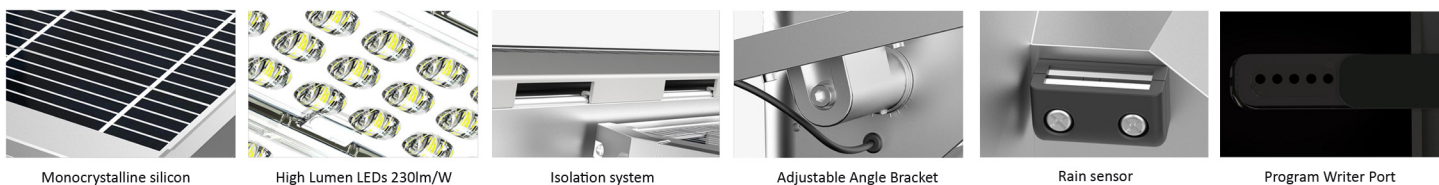
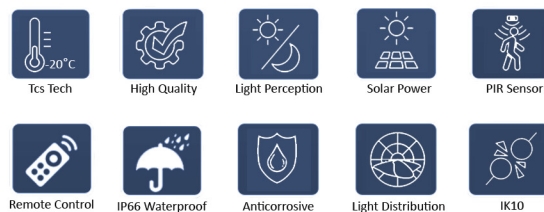
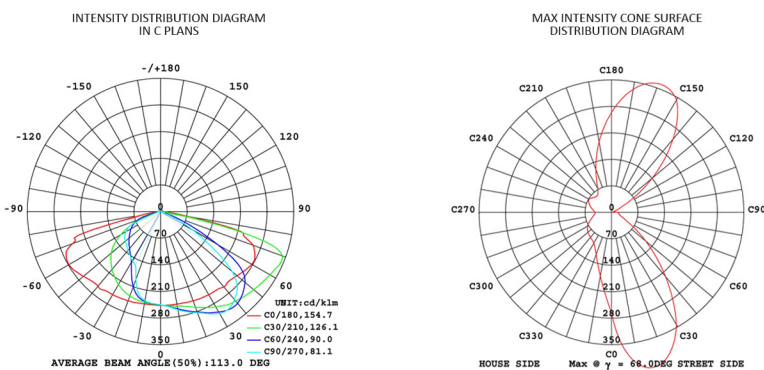
Solar powered all in one LED Street light luminaire, Body made of aluminium alloy / ABS wide beam light distribution.

Solar panel adopts M6 high-efficiency mono crystalline, Panel can be adjusted independently in vertical direction LiFePO4 battery pack enclosed in an aluminium housing. Silicon wafers efficiency up to 23.1%

High corrosion resistant capability silicon rubber gasket for dust proof & waterproof High lumen LED chip OSRAM SMD3030

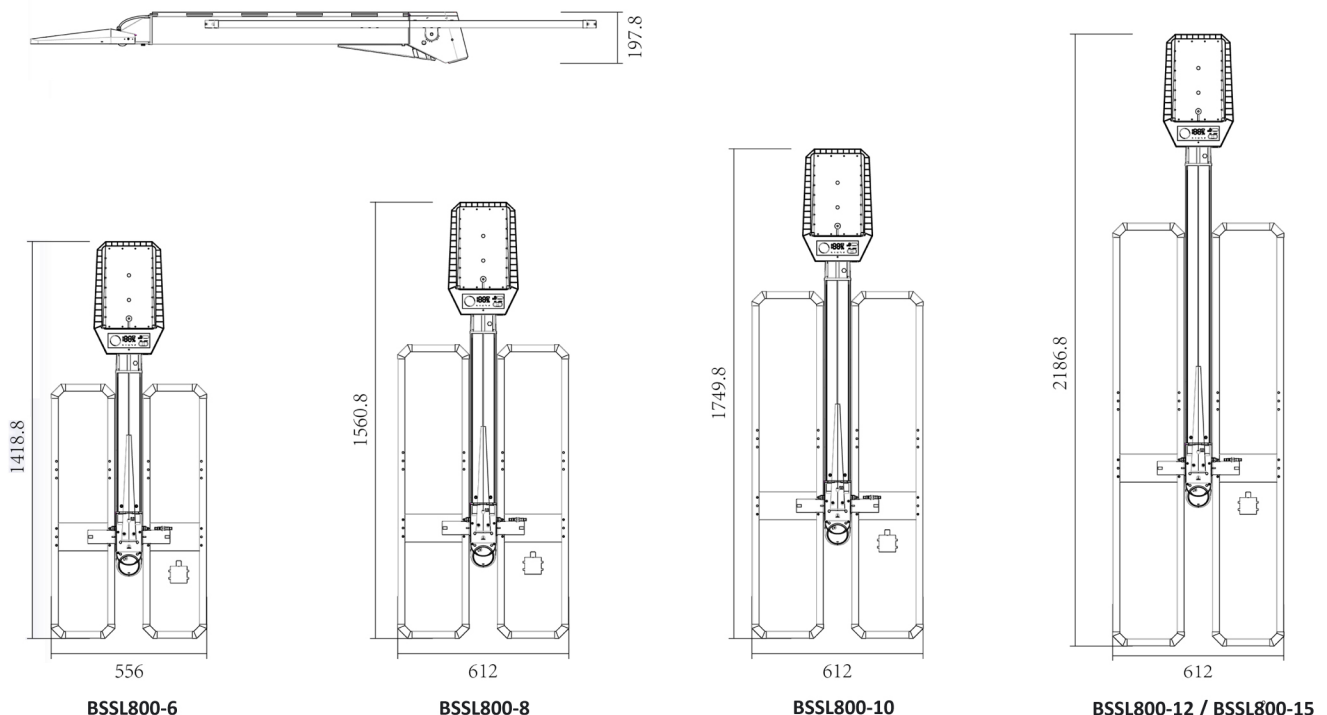
- Heat resistant and solid conduct wiring
- Ideal for Street lighting, Car Parking and wide range of external application.
- European standard of EN 60598

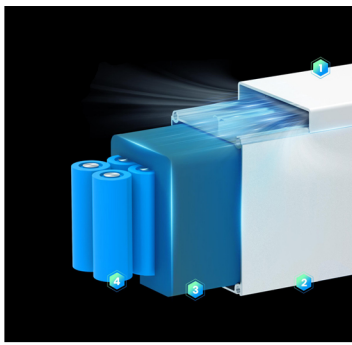
**Photometric Data**



Product Code	BSSL800-6	BSSL800-8	BSSL800-10	BSSL800-12	BSSL800-15
Rated Power	60W LED	86W LED	112W LED	140W LED	140W LED
Luminous Flux	6000LM	8000LM	10000LM	12000LM	15000LM
LED Type	3030 - OSRAM, 144pcs	3030 - OSRAM, 144pcs	3030 - OSRAM, 288pcs	3030 - OSRAM, 288pcs	3030 - OSRAM, 288pcs
Solar Panel	Monocrystalline Silicon, 14.3V	Monocrystalline Silicon, 14.3V	Monocrystalline Silicon, 14.3V	Monocrystalline Silicon, 14.3V	Monocrystalline Silicon, 14.3V
Battery	Li-ion LiFePO4	Li-ion LiFePO4	Li-ion LiFePO4	Li-ion LiFePO4	Li-ion LiFePO4
Capacity	12.8V, 358.4Wh	12.8V, 460.8Wh	12.8V, 563.2Wh	12.8V, 665.6Wh	12.8V, 819.2Wh
Working Temperature	0 ~ 55°C / -20 ~ + 70°C	0 ~ 55°C / -20 ~ + 70°C	0 ~ 55°C / -20 ~ + 70°C	0 ~ 55°C / -20 ~ + 70°C	0 ~ 55°C / -20 ~ + 70°C
Charging Time	Solar Panel ≤ 6.7H	Solar Panel ≤ 6H	Solar Panel ≤ 5.7H	Solar Panel ≤ 5.3H	Solar Panel ≤ 6.6H
Working Time in Rainyday	3 days	3 days	3 days	3 days	3 days
Efficiency	230LM/W	230LM/W	230LM/W	230LM/W	230LM/W
Color Temperature	3000 - 6000K	3000 - 6000K	3000 - 6000K	3000 - 6000K	3000 - 6000K
CRI	>80	>80	>80	>80	>80
PIR	120°, 8m. Max	120°, 8m. Max	120°, 8m. Max	120°, 8m. Max	120°, 8m. Max
Control Mode	Mechanical buttons / Remote Control				
Lighting Mode (Remote Control)	M1: 30% (PIR 30S) Till dawn, M2: 100% (5H)+25% (5H) (PIR 30S) + 70% Till dawn, M3: 70% Till dawn				
Mode Indication	M1: Red / M2: Green / M3: Orange, The mode indicator will change to the better Indicator after 5 seconds				
Raining Detection Function	The default color temperature is white, will automatically switches to warm temp at night when rain is detected				
Core Technology	ALS2.4	ALS2.4	ALS2.4	ALS2.4	ALS2.4
Installation	6M	8M	10M	12M	15M
Size	1556x556x198mm	1568x612x198mm	1750x612x198mm	2186x612x198mm	2186x612x198mm
Net Weight	12KG	14KG	16KG	19KG	20KG
Protection	IP66 / IK08	IP66 / IK08	IP66 / IK08	IP66 / IK08	IP66 / IK08
Material	ADC12 Aluminium, 6063 Aluminium, PC				
Life Span	50000Hrs				

## Dimension

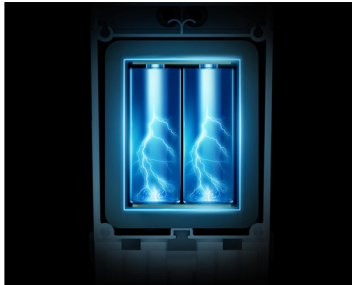




### Newly Developed X-STORM Technology

To achieve the thermal balance of the battery pack and increase the lifespan of the product to more than 5 years.

- 1- Heat insulation board
- 2- Battery pack profiles
- 3- Insulation wool
- 4- LiFePO4 electric core



### BMS Technology

A complete BMS includes: overcharge, overdischarge, overcurrent, shortcircuit protection, over-temperature protection, battery equalization, sleep/wake-up, 485 communication, residual power calculations, battery health status calculations, and accurate protection for each string of batteries.

### Battery Capacity Percentage

Battery capacity displayed from 0 to 100%, after the screen light up for 30s

**AC charging display:** Plug in and showed

**PIR ON/OFF status:** YES

**Low battery display:** Low battery icon will illuminate when the battery capacity drops below 20%. Low battery indicator blinks for 30 seconds when the battery level is equal to 0% and then enters into undervoltage hibernation.

**Lighting mode display:**

Daytime: Displayed when the battery level is greater than 20% (but dimmed when the screen is rested).

Nighttime: Displayed with screen activated for 30 seconds.

### High Efficacy SMD LED by OSRAM

Package: white SMT package, colored diffused silicone resin

Typ. Radiation: 120° (Lambertian emitter)

Color temperature: 2700K - 6500K

CRI: 80 (min.), 82 (typ.)

ESD: 2 kV acc. to ANSI/ESDA/JEDEC JS-001

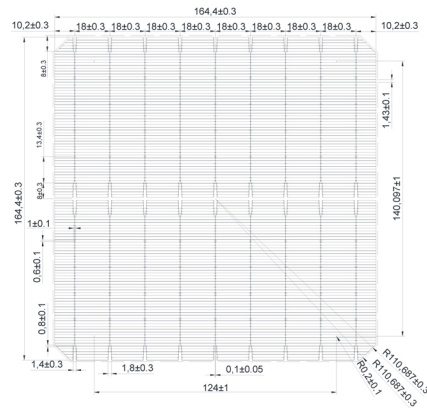
(HBM, Class 2)

Luminous Flux: typ. 138 lm @ 3000 K

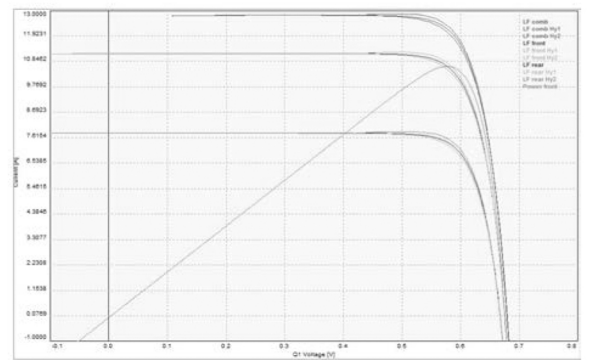
Luminous efficacy: typ. 150 lm/W @ 3000 K



### Solar Panel - Monocrystalline



### Bifacial I-V Curve



### Adjustable Solar Panels (Both integrated and separate)

It can solve the the problem of sunlight Angle when lights are installed on both sides of the road.

